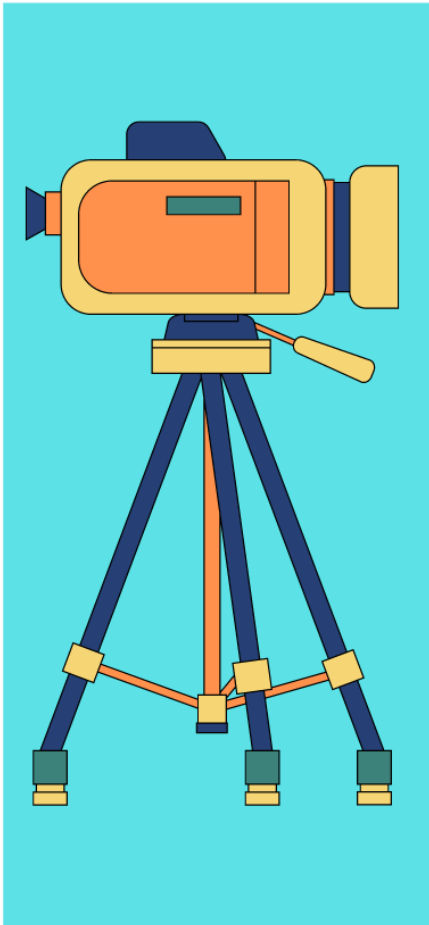




# PHOTO- GRAPHY



'23  
COMP  
GUIDE

**FREE REGISTRATION:**  
July 1 - August 15  
Find Your Contests Inside!  
[okstatefair.com/competitions/creative-arts](http://okstatefair.com/competitions/creative-arts)

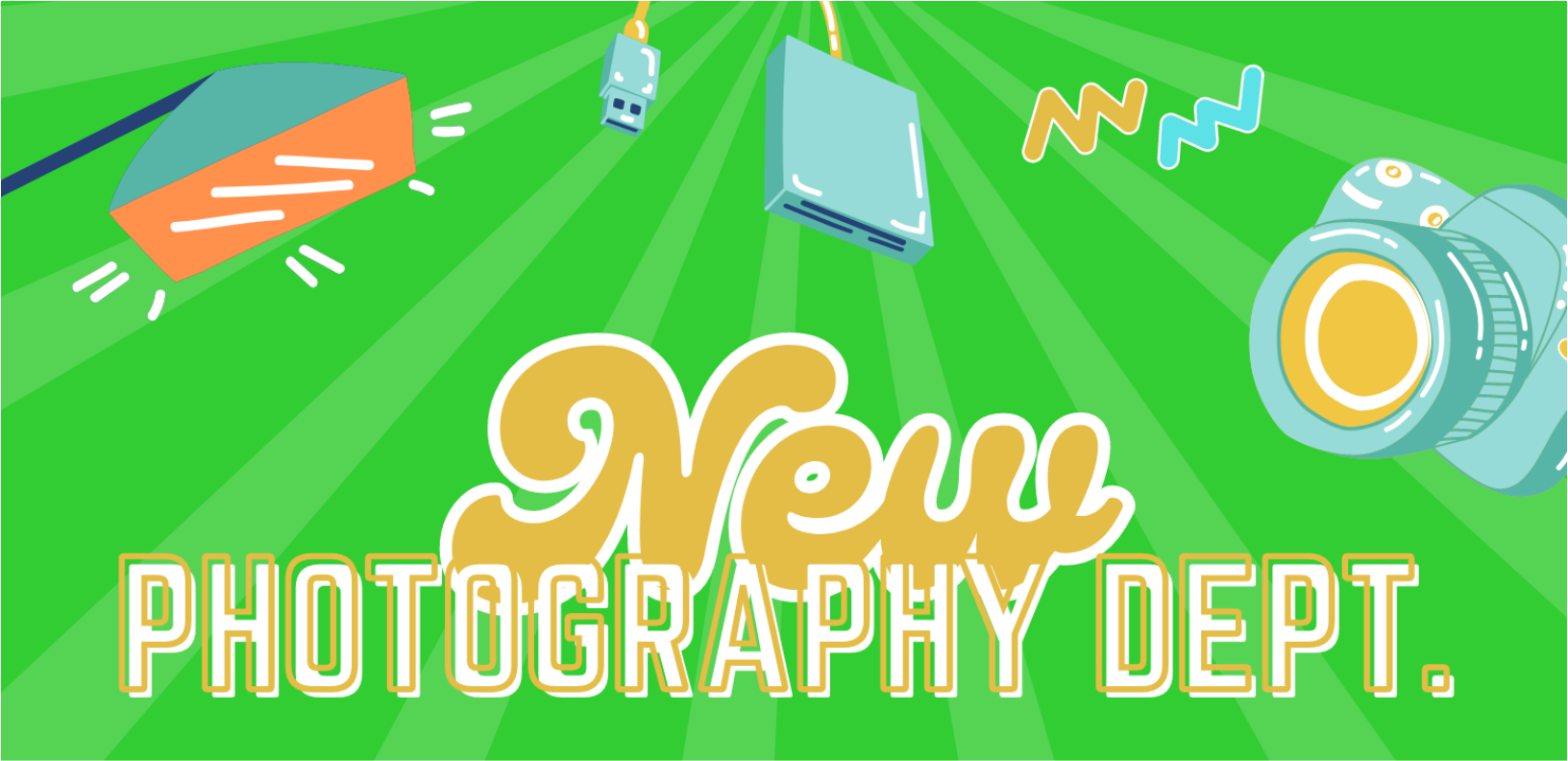


**OKLAHOMA  
STATE FAIR**

# **MISSION STATEMENT**

Oklahoma State Fair, Inc. is a 501(c)(3) not-for-profit corporation that serves the people of Oklahoma and is dedicated to continuing the organization's heritage of education, entertainment, and economic development through the operation of the OKC Fairgrounds and the annual Oklahoma State Fair.



A vibrant green background with radiating lines. At the top left is a blue and orange camera lens. At the top center is a blue USB drive. At the top right is a blue camera body. In the center, the word "New" is written in a large, bubbly, yellow font with a white outline. Below it, the words "PHOTOGRAPHY DEPT." are written in a bold, yellow, outlined font. There are also some blue and yellow squiggly lines scattered around the top right.

# New PHOTOGRAPHY DEPT.

**TAKE IN WEEKEND AUG. 26 - 27**

**NEW ONLINE PHOTO CLASS CATEGORY (PG. 9)**

**NEW SELFIE CLASS (PG. 10)**



# 2023 Creative Arts Program Photography Competition Guide

## Table of Contents

*Click on each contest to get more information!*

Oklahoma State Fair Mission Statement.....	Pg. 2
What's New .....	Pg. 3
Calendar of Events .....	Pg. 5
Social Media Info .....	Pg. 6
Creative Arts Drop-Off, Pick Up & Directions .....	Pg. 7
Entry Info & Department Regulations .....	Pg. 8

### PHOTOGRAPHY DIVISIONS:

<b>ONLINE:</b> Photos from the Fair .....	Pg. 9
Photography Show(3803).....	Pg. 10
<b>LIVE:</b> Digital Photography Shootout (3804).....	Pg. 11

## STAFF CONTACTS

Carol Bertels  
Superintendent  
405-706-8878

Morgan Chappell  
Creative Programs Manager  
[CreativePrograms@okstatefair.com](mailto:CreativePrograms@okstatefair.com)  
405-948-6731

## 2023 Creative Arts Quick Reference Guide

**Creative Arts registrations must be submitted online.**

Starting July 1, [CLICK HERE](#) to register.

### Competition Guides

**Posted Online:** Thursday, June 1

**Registration:** Saturday, July 1, 9 a.m. - Tuesday, August 15

**Deliver Exhibits:** Saturday, August 26, 10 a.m. - 4 p.m.  
Sunday, August 27, 11 a.m. - 4 p.m.

**Pick Up Exhibits:** Monday, September 25, 2 - 7 p.m.  
Tuesday, September 26, 9 a.m. - 2 p.m.

# Creative Arts Calendar of Events

Schedule for free registration: July 1 at 9 a.m. through August 15

**FREE REGISTRATION MUST BE DONE ONLINE.** If you do not have computer access, please go to your local library or contact your local OSU Cooperative Extension Services.

**Late registration:** We will no longer accept late registration, but we will have on-site registration during take-in.

**On-site registration:** August 26, from 10 a.m. to 4 p.m. and August 27, from 11 a.m. to 4 p.m. Exhibitors will be charged a \$12 fee per exhibitor (not per entry). **Credit or Debit cards will only be accepted.**

Highlighted Below Are 2023 Date Changes. Please be aware.

## CALENDAR

- |                                 |   |
|---------------------------------|---|
| June 1                          | New competition guides posted online.   |
| July 1                          | Online registration opens at 9 a.m.   |
| August 15                       | Entry deadline for the Oklahoma State Fair Creative Arts competitions and contests. Free registrations must be received online by August 15.  |
| August 16                       | <b>We will no longer accept late online registrations,</b> but you will be able to register on site during take-in with a small fee of \$12. <u>All entries</u> will be turned in on the listed check-in days or on the day of the live contest.  |
| <b>August 26</b>                | Entry clerks will receive items at the Creative Arts Building from 10 a.m. to 4 p.m. Late registration will be available to enter with a \$12 late registration fee done electronically.  |
| <b>August 27</b>                | Entry clerks will receive items at the Creative Arts Building from 11 a.m. to 4 p.m. Late registration will be available to enter with a \$12 late registration fee done electronically.  |
| <b>August 28 - September 11</b> | All Creative Arts entries judged (excludes live contest entries). This is closed judging. Exhibitors are not permitted to attend. We encourage you to come to the Fair to view results. Judging results will be posted online as soon as they are available, possibly after the end of the State Fair. <b>Do not call or email to ask for results. They cannot be given out prior to posting.</b> |
| September 14                    | Oklahoma State Fair opens! The Creative Arts Building will host a series of demonstrations, live contests, and special events every day of the Fair.  |
| September 24                    | Last day of the Oklahoma State Fair.  |
| September 25                    | Entry clerks will release exhibits upon presentation of claim check at the Creative Arts Building from 2 to 7 p.m.  |
| September 26                    | Entry clerks will release exhibits upon presentation of claim check at the Creative Arts Building from 9 a.m. to 2 p.m. Items not picked up become property of the Oklahoma State Fair.   |

**SHOW US WHAT YOU'RE WORKING WITH**

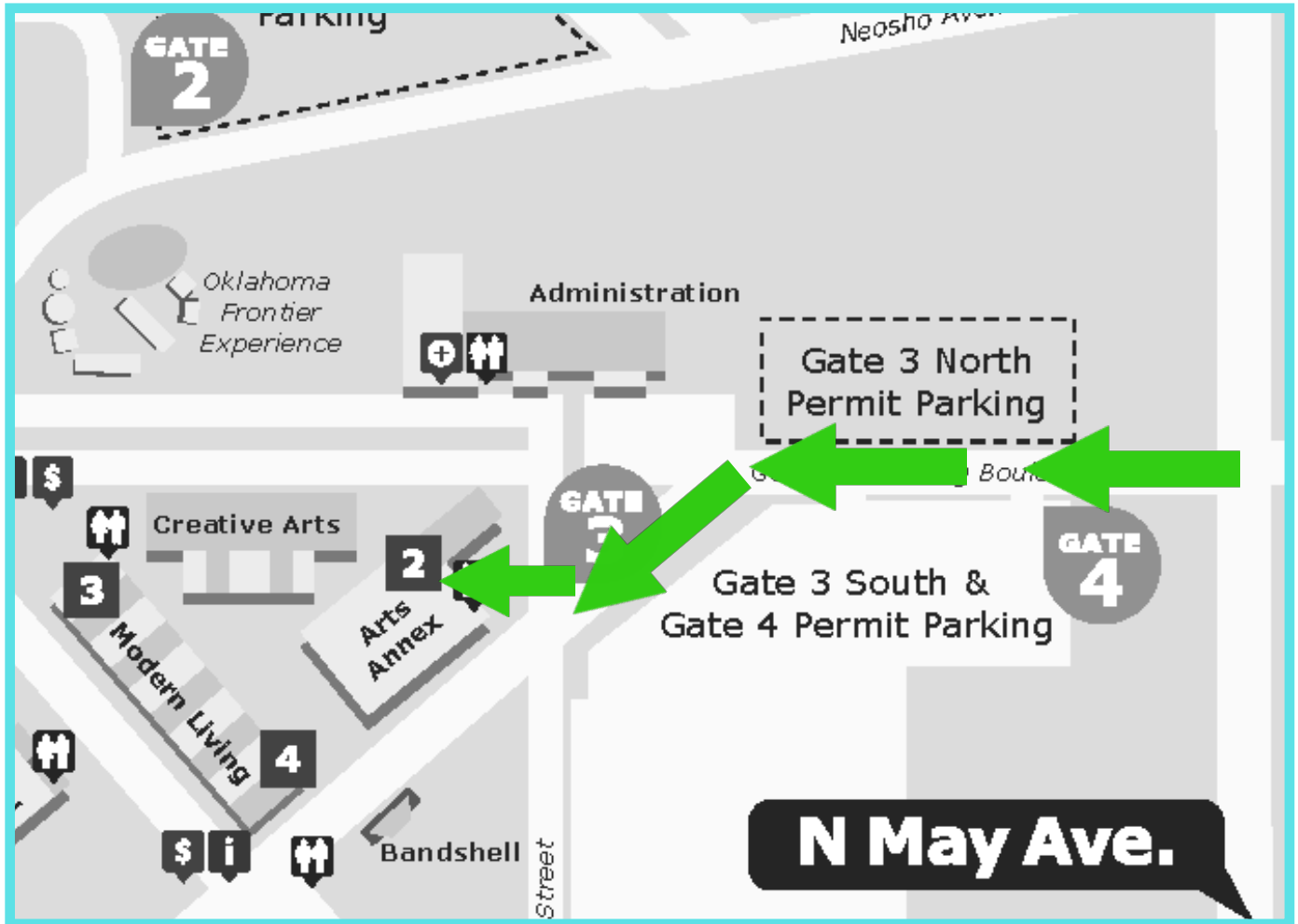


**We know sometimes it takes all year to create something magical to enter in the Fair, or just a few days! Share your progress with us! Tag the Fair when you share your creations and ribbons by using #okstatefair!**



**@okstatefair**

# Creative Arts Drop-Off & Pick Up Map & Information



## How To Get Here: Pre-Fair

Our physical address is 3000 General Pershing Blvd, OKC, OK 73107.

From I-44 take the NW 10th St. eastbound exit and follow until NW 10th St. and May Ave. (2nd light). Turn right onto May Ave. Proceed to Gate 3 (1st light) and drive towards the gate. You will then enter the OKC Fairgrounds and make your way to the Arts Annex.

## Drop-Off Information

Drop-off is Saturday, August 26 from 10 a.m. - 4 p.m. and Sunday, August 27 from 11 a.m. - 4 p.m. At check-in you will be given a claim check tag. PLEASE SAVE THESE as they are what you will need to pick up your item(s).

## Pick Up Information

Pick Up is Monday, September 25 from 2 -7 p.m. and Tuesday, September 26 from 9 a.m. - 2 p.m. Please remember to bring your claim check tag as this is how you reclaim your pieces.

# CREATIVE ARTS RULES AND REGULATIONS

## ENTRY INFORMATION

**Who Can Enter?** ONLY OKLAHOMA RESIDENTS may enter our contests. Exhibitors entering must be amateurs unless an Open (expert) Division is offered.

**Who is considered an Amateur?** Someone who earns less than 10% of their income from this skill. If you have taught this craft before, or currently teach, you are not considered an Amateur, but may enter in an open class, if available.

**Are there any size limitations?** Furniture may be no larger than 40" in any direction. All other exhibits are limited to 30" in any direction.

**How many exhibits can be entered?** ONE ENTRY PER CLASS (unless otherwise stated.) There is no limit on the total number of entries. Photography is the exception with 12 total entries allowed per exhibitor. All entries must have been completed since the final day of the previous Oklahoma State Fair.

**What is the cost to enter?** CREATIVE ARTS ENTRIES ARE FREE if registered by August 15. (Only the wine contest requires an entry fee.)

**May I mail in my exhibit?** No.

**Do I need to pre-register for live contests?** Yes. You cannot register the day of.

**How do I get into the Fair if I am entered in a live contest?** **ONLY EXHIBITORS** receive FREE ENTRY AND PARKING with live contests. Family and friends will need to purchase a ticket to get in the day of the contest. Please check out our pre-sale of tickets starting in July and ending the day before the start of the Fair.

**All entries must be the work of the exhibitor and completed since the previous Oklahoma State Fair except as noted.**

## CREATIVE ARTS DEPARTMENT REGULATIONS

- The Oklahoma State Fair reserves the right to reject any exhibit offered if it is objectionable in any way, if it requires an excessive amount of space, or if the capacity of the department has been reached. Any contest may be cancelled for lack of entries.
- Each item turned in is completed by one person, unless otherwise noted in the competition information.
- Your items will be handled with care, however, Oklahoma State Fair, Inc. is not responsible for items that are damaged while on display during the Fair. Exhibitors MAY NOT supply their own display stands. Only OSF stands will be used for display.
- Each exhibit will be evaluated by qualified individuals and the decision of the judge(s) is final. All cash prizes will be paid from the awards as marked by the judges and not from ribbons that may be attached to the exhibits. Judges are instructed not to award cash prizes unless the exhibit is deemed worthy of the placing awarded. Premium payouts for the Creative Arts Department will be mailed to exhibitors after the close of the Fair.
- Within 90 days from the last day of the 2023 Oklahoma State Fair, it is the responsibility of the Payee to file, in writing, a claim for lost or incorrect awards.
- If it is ascertained that an exhibitor has made any false statement with regards to any article or exhibit, or if any exhibitor attempts to harass or interfere with the judge or judges in the performance of their duties, the exhibitor shall be excluded from competition and forfeit all premiums.
- Any protest must be made in writing and accompanied by a deposit of \$50, which will be forfeited if protest is not sustained. Said protest must state plainly the cause of complaint or appeal and must be filed with the Creative Programs Manager by 5 p.m. on Thursday of the closing week of the Fair. Judges will be encouraged to view exhibits after items have been placed on display with names. If they believe that an exhibitor is not in the correct skill level, that judge will be encouraged to protest the placement.
- Every effort will be made to display entries in an attractive arrangement; however, items entered for competition will be displayed through 3rd place. Other entries will be displayed only as space is available and at the discretion of the superintendents.



# ONLINE PHOTOGRAPHY CONTEST

## PHOTOS FROM THE FAIR

### JUNE 19 - JULY 7 ONLY!

If you ever have attended the Oklahoma State Fair, chances are you captured some memories with a camera. Send in your favorite Fair photos for your chance to win season passes for the 2023 Oklahoma State Fair – that's one admission for each day!

#### **The Rules:**

This contest is open to all ages. Amateurs only.  
All photos must be no greater than 10MB.  
The photos can be black & white, color, or sepia.  
One entry, per person, per category.

All applicants must enter their submissions on the State Fair entry page found at <https://okstatefair.wufoo.com/forms/online-photo-contest#public>.

The following information will be asked for on the form:

Contestant First and Last Name:

Current Address:

Phone Number(s):

Email:

Category:

**Entries will be accepted from Monday, June 19, 2023 through Friday, July 7, 2023.** Late entries will not be accepted. Winners will be announced on or before Friday, July 14, 2023.

By submitting your entry, you are giving the Oklahoma State Fair permission to reproduce your image in any display, merchandise, publication or printed material without compensation.

#### **Categories**

**Animals & Agriculture Aficionado:** From prize-winning livestock to antique tractors and farm machinery on display, give us your best shot.

**Carnival Ride Renegades:** Spinning, riding, or upside-down, submit your best photo from the carnival midway. This does not include Ferris Wheel Photos.

**Fair Favorites:** This is a "wild card" category of sorts. Show us what you love about the Oklahoma State Fair!

**Fair Food Fanatic:** From traditional to unique, we're looking for the best Fair food photos.

**Wheel Watchers:** The Oklahoma State Fair has three Ferris Wheels - show off your snapshot of one of them!

#### **AWARDS**

The top photo in each category will receive two (2) adult season passes and one (1) season parking valid for all days during the 2023 Oklahoma State Fair, September 14 - 24.

These five winning photos will be on display in the photography exhibit during the Fair and will receive first place rosettes. There will be a 'Best Of Show' voted for the top five photos.

# PHOTOGRAPHY SHOW

## Division 3803

**Due to class size limitations, exhibitors may only enter one photo per class, up to 12 entries total.**

Note: Young photographers may choose to enter in the adult class but may not enter both youth and adult.

**Important:**

Photos are turned in physically during exhibit delivery and NOT DIGITALLY. All photos must be 8" x 10" or 8" x 12" in size and mounted on top of an 11" x 14" black backing, OR 8" x 8" and mounted on top of an 11" x 11" black backing. Photos may be mounted on top of a solid piece of cardstock, poster board, matte board or black foam core. Photos with a cut matte on top of the picture WILL NOT be accepted. Photos must not be titled or identified on the front but identifying information will be accepted on back of print. Photos will not be accepted if they do not follow these requirements.

Only amateur photographers may enter. An amateur photographer derives no more than 10% of their income from photography.

All photos must be taken by the exhibitor. Taking a photo of another photo does not make it eligible for entry by an exhibitor. Black & white or color photos are accepted in all classes. Photos previously entered in the Oklahoma State Fair are not eligible for entry. Misclassified photos will be moved to the appropriate class. Photos will not be released early.

**Adults**

- 01. Wildlife – mammals
- 02. Wildlife – birds
- 03. Wildlife – insects
- 04. Wildlife – other
- 05. Rural Oklahoma – structures
- 06. Rural Oklahoma – landscapes
- 07. Urban Oklahoma – close up
- 08. Urban Oklahoma – other views
- 09. Americana (Other 49 states) – urban
- 10. Americana (Other 49 states) – rural
- 11. International
- 12. Geometric & abstract patterns
- 13. Portraits – formal
- 14. Portraits – candid
- 15. Still life
- 16. Action
- 17. Alternate processes (Film based processes)

- 18. Digitally enhanced art
- 19. Twilight/Nighttime
- 20. Weather
- 21. At the Fair
- 22. Pets
- 23. Floral – close up
- 24. Floral – other views
- 25. Selfies
- 26. Miscellaneous

**Youth (18 & under)**

- 27. Nature and wildlife
- 28. Landscapes
- 29. Pets
- 30. Weather
- 31. Digitally enhanced art
- 32. Portraits & people
- 33. Sceptia or black & white
- 34. Miscellaneous

**AWARDS**

Ribbons will be awarded through 10th place in each class. Honorable mention ribbons will be awarded for up to 50 adult entries and up to 15 youth entries.

- BEST OF SHOW Adult..... Rosette, Medallion & \$125**
- PORTFOLIO AWARD Adult\*\* ..... Rosette & \$50**
- BEST OF SHOW Youth..... Rosette, Medallion & \$75**
- PORTFOLIO AWARD Youth\*\* ..... Rosette & \$50**
- SUPERINTENDENT’S CHOICE ..... Rosette & \$25**

\*\*Portfolio Award is presented to the exhibitor with the highest number of points in division 3803. Each 1st place win counts as 3 points, 2nd place counts as 2 points, 3rd place counts as 1 point.

# OKLAHOMA STATE FAIR SHUTTERBUGS: LIVE DIGITAL PHOTO SHOOTOUT

## Division 3804

### Sunday, September 17, 2023

- 1 p.m. - Check-in at a location: Arts Annex
- 4 p.m. - Upload Photos
- 6 - 6:30 p.m. - Judging
- 7 p.m. - Awards Announcement

Space is limited to the first 50 exhibitors who pre-register in each class.

After check-in and instructions are given, participants will be released into the OKC Fairgrounds to shoot-it-out with other digital photographers. Participants must return to the Arts Annex by 4 p.m. to download the image of their choice from their camera memory card.

PLEASE REMOVE ALL PHOTOS FROM THE SELECTED FILE IN YOUR MEMORY CARD BEFORE STARTING THE CONTEST.

Participants may submit only ONE photo for judging. Submitted photos from all participants must include the element provided to them at check-in.

Judging will take place from 6 - 6:30 p.m. All images will be compiled into a slide show. Participants and fairgoers will then vote for three of their favorites, with the top three vote recipients placing first through third.

NO DIGITAL ALTERATIONS or CROPPING! This includes any in-camera adjustment options.

NO TRIPODS ALLOWED. Tripods are a tripping hazard and will not be permitted. Monopods are allowed.

By participating in this contest, exhibitors are giving their permission to the Oklahoma State Fair to reproduce their image in any Fair publications, printed materials or merchandise without compensation.

Only amateur photographers may enter. An amateur derives no more than 10% of their income from photography.

### Classes:

- 01. Adults
- 02. 18 years or younger

Ribbons will be awarded through 10th place in each class.

### AWARDS

<b>1st Place (in each class)</b> .....	<b>Rosette &amp; \$50</b>
<b>2nd Place (in each class)</b> .....	<b>\$25</b>
<b>3rd Place (in each class)</b> .....	<b>\$15</b>