



CHINA CERAMICS & ANTIQUES



'23
COMP
GUIDE

FREE REGISTRATION:

July 1 - August 15

Find Your Contests Inside!

okstatefair.com/competitions/creative-arts



OKLAHOMA
STATE FAIR

MISSION STATEMENT

Oklahoma State Fair, Inc. is a 501(c)(3) not-for-profit corporation that serves the people of Oklahoma and is dedicated to continuing the organization's heritage of education, entertainment, and economic development through the operation of the OKC Fairgrounds and the annual Oklahoma State Fair.





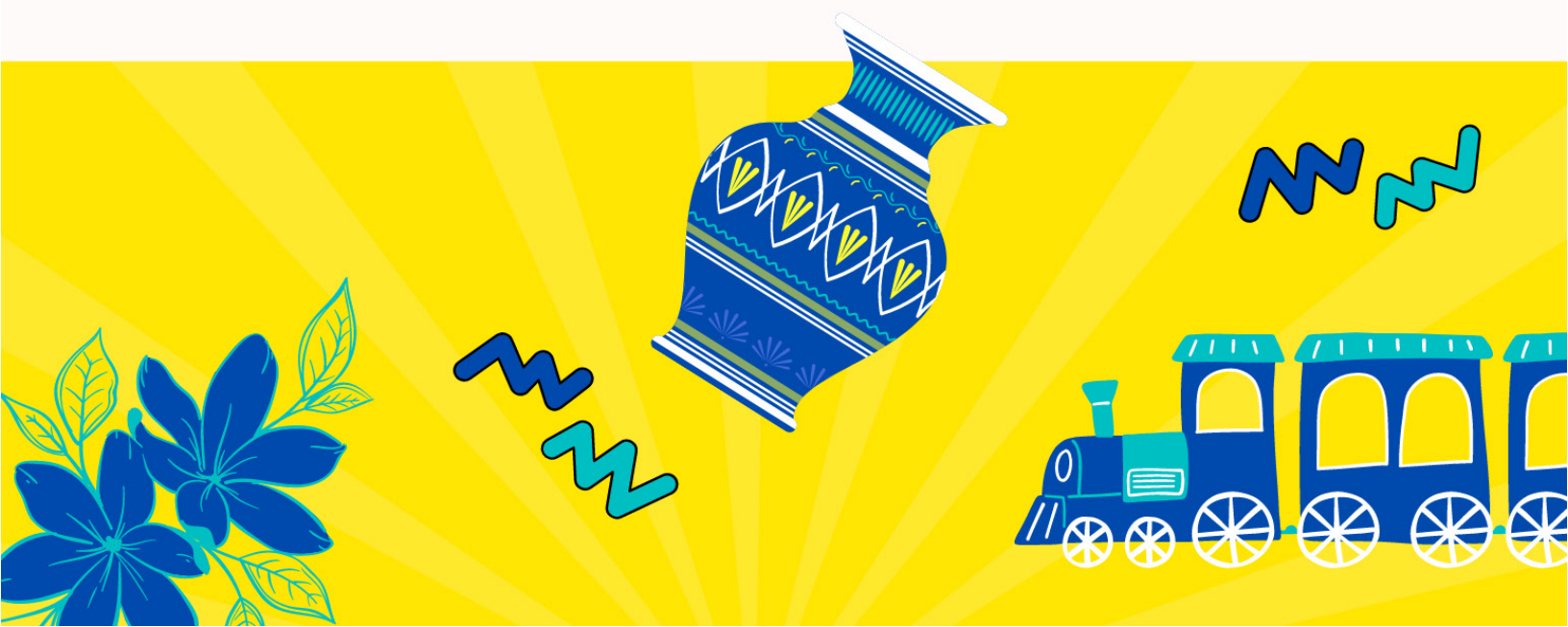
New

CERAMICS, CHINA & ANTIQUES DEPT.

TAKE IN WEEKEND - AUG. 26 - 27

CHINA PAINTING - 'FANCIFUL SHOE' (PG. 10)

GREAT POTTERY THROW DOWN (PG. 11)



2023 Creative Arts Program

China, Ceramics and Antiques Competition Guide

Table of Contents

Click on each contest to get more information!

Oklahoma State Fair Mission Statement.....	Pg. 2
What's New	Pg. 3
Calendar of Events	Pg. 5
Social Media Info	Pg. 6
Creative Arts Drop-Off, Pick Up & Directions	Pg. 7
Entry Info & Department Regulations	Pg. 8

CHINA PAINTING, CERAMICS & ANTIQUES DIVISIONS:

China Painting (3535, 3536, 3537).....	Pg. 9
LIVE: China Painting Contest (3538)	Pg. 10
Ceramics (3539, 3540, 3541).....	Pg. 11
LIVE: Great Pottery Throw Down (3542)	Pg. 11
General Antiques (3543)	Pg. 12
Antique and Reproduction Dolls (3544).....	Pg. 13
Antique Toys (3545).....	Pg. 14

STAFF CONTACTS

Joyce Kanatzar
Superintendent
405-603-5229

Morgan Chappell
Creative Programs Manager
CreativePrograms@okstatefair.com
405-948-6731

2023 Creative Arts Quick Reference Guide

Creative Arts registrations must be submitted online.

Starting July 1, [CLICK HERE](#) to register.

Competition Guides

Posted Online: Thursday, June 1

Registration: Saturday, July 1, 9 a.m. - Tuesday, August 15

Deliver Exhibits: Saturday, August 26, 10 a.m. - 4 p.m.
Sunday, August 27, 11 a.m. - 4 p.m.

Pick Up Exhibits: Monday, September 25, 2 - 7 p.m.
Tuesday, September 26, 9 a.m. - 2 p.m.

Creative Arts Calendar of Events

Schedule for free registration: July 1 at 9 a.m. through August 15

FREE REGISTRATION MUST BE DONE ONLINE. If you do not have computer access, please go to your local library or contact your local OSU Cooperative Extension Services.

Late registration: We will no longer accept late registration, but we will have on-site registration during take-in.

On-site registration: August 26, from 10 a.m. to 4 p.m. and August 27, from 11 a.m. to 4 p.m. Exhibitors will be charged a \$12 fee per exhibitor (not per entry). **Credit or Debit cards will only be accepted.**

Highlighted Below Are 2023 Date Changes. Please be aware.

CALENDAR

- June 1** New competition guides posted online.
- July 1** Online registration opens at 9 a.m.
- August 15** Entry deadline for the Oklahoma State Fair Creative Arts competitions and contests. Free registrations must be received online by August 15.
- August 16** We will no longer accept late online registrations, but you will be able to register on site during take-in with a small fee of \$12. All entries will be turned in on the listed check-in days or on the day of the live contest.
- August 26** Entry clerks will receive items at the Creative Arts Building from 10 a.m. to 4 p.m. Late registration will be available to enter with a \$12 late registration fee done electronically.
- August 27** Entry clerks will receive items at the Creative Arts Building from 11 a.m. to 4 p.m. Late registration will be available to enter with a \$12 late registration fee done electronically.
- August 28 - September 11** All Creative Arts entries judged (excludes live contest entries). This is closed judging. Exhibitors are not permitted to attend. We encourage you to come to the Fair to view results. Judging results will be posted online as soon as they are available, possibly after the end of the State Fair. **Do not call or email to ask for results. They cannot be given out prior to posting.**
- September 14** Oklahoma State Fair opens! The Creative Arts Building will host a series of demonstrations, live contests, and special events every day of the Fair.
- September 24** Last day of the Oklahoma State Fair.
- September 25** Entry clerks will release exhibits upon presentation of claim check at the Creative Arts Building from 2 to 7 p.m.
- September 26** Entry clerks will release exhibits upon presentation of claim check at the Creative Arts Building from 9 a.m. to 2 p.m. Items not picked up become property of the Oklahoma State Fair.

SHOW US WHAT YOU'RE WORKING WITH

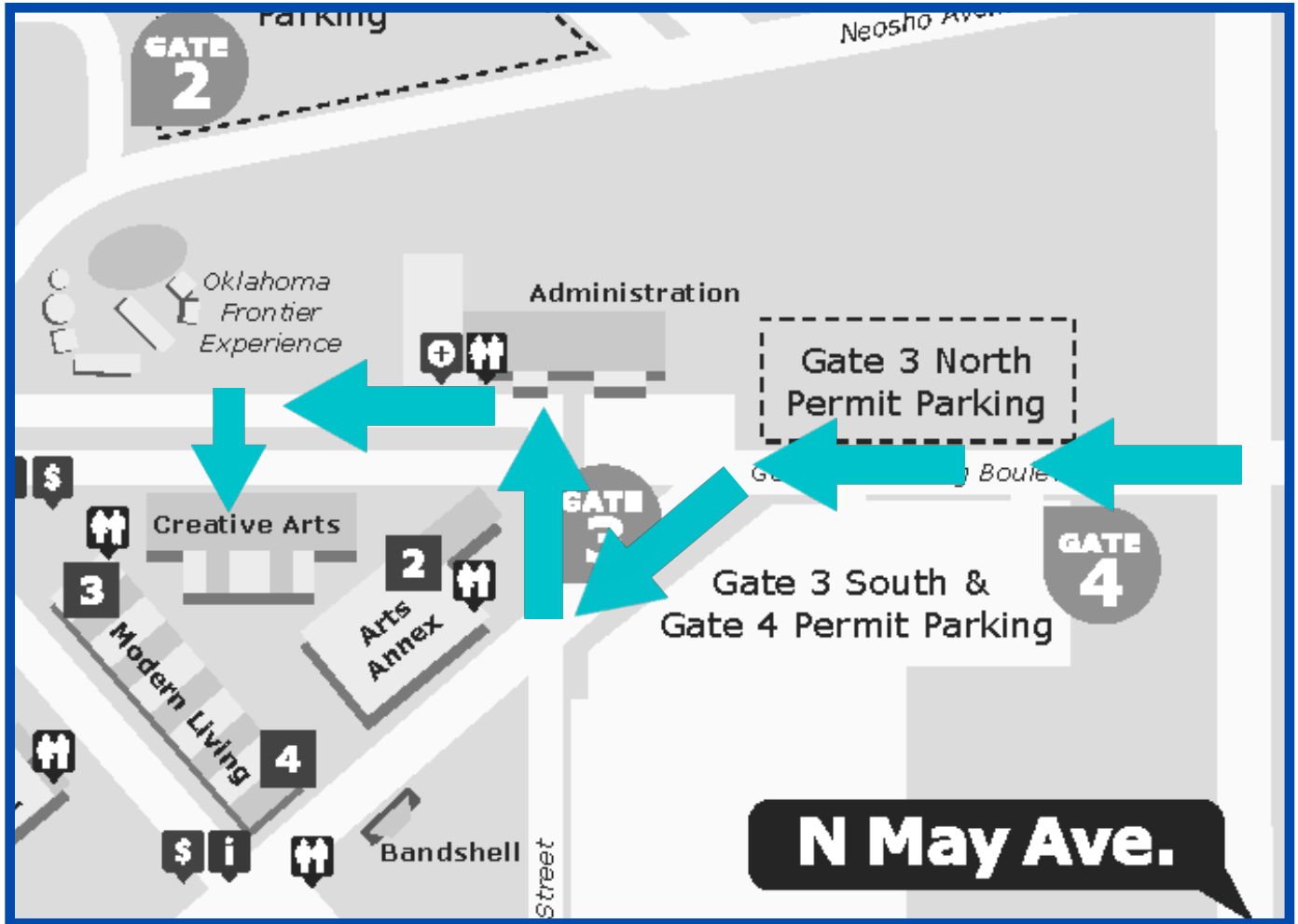


We know sometimes it takes all year to create something magical to enter in the Fair, or just a few days! Share your progress with us! Tag the Fair when you share your creations and ribbons by using #okstatefair!



@okstatefair

Creative Arts Drop-Off & Pick Up Map & Information



How To Get Here: Pre-Fair

Our physical address is 3100 General Pershing Blvd, OKC, OK 73107.

From I-44 take the NW 10th St. eastbound exit and follow until NW 10th St. and May Ave. (2nd light). Turn right onto May Ave. Proceed to Gate 3 (1st light) and drive towards the gate. You will then enter the OKC Fairgrounds and make your way to the Creative Arts Building.

Drop-Off Information

Drop-off is Saturday, August 26 from 10 a.m. - 4 p.m. and Sunday, August 27 from 11 a.m. - 4 p.m. At check-in you will be given a claim check tag. PLEASE SAVE THESE as they are what you will need to pick up your item(s).

Pick Up Information

Pick Up is Monday, September 25 from 2 - 7 p.m. and Tuesday, September 26 from 9 a.m. - 2 p.m. Please remember to bring your claim check tag as this is how you reclaim your pieces.

CREATIVE ARTS RULES AND REGULATIONS

ENTRY INFORMATION

Who Can Enter? ONLY OKLAHOMA RESIDENTS may enter our contests. Exhibitors entering must be amateurs unless an Open (expert) Division is offered.

Who is considered an Amateur? Someone who earns less than 10% of their income from this skill. If you have taught this craft before, or currently teach, you are not considered an Amateur, but may enter in an open class, if available.

Are there any size limitations? Furniture may be no larger than 40" in any direction. All other exhibits are limited to 30" in any direction.

How many exhibits can be entered? ONE ENTRY PER CLASS (unless otherwise stated.) There is no limit on the total number of entries. Photography is the exception with 12 total entries allowed per exhibitor. All entries must have been completed since the final day of the previous Oklahoma State Fair.

What is the cost to enter? CREATIVE ARTS ENTRIES ARE FREE if registered by August 15. (Only the wine contest requires an entry fee.)

May I mail in my exhibit? No.

Do I need to pre-register for live contests? Yes. You cannot register the day of.

How do I get into the Fair if I am entered in a live contest? ONLY EXHIBITORS receive FREE ENTRY AND PARKING with live contests. Family and friends will need to purchase a ticket to get in the day of the contest. Please check out our pre-sale of tickets starting in July and ending the day before the start of the Fair.

All entries must be the work of the exhibitor and completed since the previous Oklahoma State Fair except as noted.

CREATIVE ARTS DEPARTMENT REGULATIONS

- The Oklahoma State Fair reserves the right to reject any exhibit offered if it is objectionable in any way, if it requires an excessive amount of space, or if the capacity of the department has been reached. Any contest may be cancelled for lack of entries.
- Each item turned in is completed by one person, unless otherwise noted in the competition information.
- Your items will be handled with care, however, Oklahoma State Fair, Inc. is not responsible for items that are damaged while on display during the Fair. Exhibitors MAY NOT supply their own display stands. Only OSF stands will be used for display.
- Each exhibit will be evaluated by qualified individuals and the decision of the judge(s) is final. All cash prizes will be paid from the awards as marked by the judges and not from ribbons that may be attached to the exhibits. Judges are instructed not to award cash prizes unless the exhibit is deemed worthy of the placing awarded. Premium payouts for the Creative Arts Department will be mailed to exhibitors after the close of the Fair.
- Within 90 days from the last day of the 2023 Oklahoma State Fair, it is the responsibility of the Payee to file, in writing, a claim for lost or incorrect awards.
- If it is ascertained that an exhibitor has made any false statement with regards to any article or exhibit, or if any exhibitor attempts to harass or interfere with the judge or judges in the performance of their duties, the exhibitor shall be excluded from competition and forfeit all premiums.
- Any protest must be made in writing and accompanied by a deposit of \$50, which will be forfeited if protest is not sustained. Said protest must state plainly the cause of complaint or appeal and must be filed with the Creative Programs Manager by 5 p.m. on Thursday of the closing week of the Fair. Judges will be encouraged to view exhibits after items have been placed on display with names. If they believe that an exhibitor is not in the correct skill level, that judge will be encouraged to protest the placement.
- Every effort will be made to display entries in an attractive arrangement; however, items entered for competition will be displayed through 3rd place. Other entries will be displayed only as space is available and at the discretion of the superintendents.

CHINA PAINTING

Division 3535, 3536, and 3537

Exhibitors may ONLY enter one class (Novice, Advanced or Open) each year. Exhibitors may opt to move to a class with a higher experience level. Best of Show award winners may not return to a lower level, regardless of experience.

No work with decals will be accepted in Hand-Painted China. Plate stands will be provided. No personal stands will be accepted at check in.

Please select the division which best reflects your level of experience:

Division 3535 - Novice

For painters who have been painting 4 years or less. Only 1 entry per class.

Division 3536 - Advanced

For painters who have never sold any work and have won 10 blue ribbons or less. Only 1 entry per class.

Division 3537 - Open

For all china painters, including instructors & professionals. Only 1 entry per class.

Division 3535 - Novice

01. Floral
02. Dresden
03. Fruit
04. Vegetable
05. Nature
06. Wildlife (other than birds)
07. Birds or fowl
08. Enamel or raised paste
09. Pen work
10. Christmas item
11. Halloween item
12. Fantasy item
13. Portraits
14. Painting on ceramic tile
15. Miscellaneous article

Division 3536 & 3537 - Advanced & Open

01. Small roses
02. Large roses
03. Floral (other than roses)
04. Dresden

Division 3536 & 3537 (continued)

05. Fruit
06. Vegetable
07. Nature
08. Scene
09. Wildlife (other than birds)
10. Birds or fowl
11. Enamel or raised paste
12. Pen work
13. Delft
14. Christmas item
15. Christmas tree ornament
16. Halloween item
17. Modern Design
18. Fantasy items
19. Portraits
20. Silver, gold or lustre design
21. Painting on ceramic tile
22. Painting on porcelain bisque
23. Miniatures
24. Miscellaneous article

AWARDS

Ribbons will be awarded through 10th place in Novice.

Ribbons will be awarded through 5th place in Advanced.

Ribbons will be awarded through 3rd place in Open.

BEST OF SHOW, Novice (3535)..... Rosette & \$25

BEST OF SHOW, Advanced (3536) Rosette & \$25

BEST OF SHOW, Open (3537) Rosette & \$25

CHINA PAINTING LIVE CONTEST
with the World Organization of China Painters
Division 3538

Friday, September 15, 2023

Check-in: 10:30 -11 a.m. (NO LATE CHECK-INS)

Judging Begins: 11 a.m.

Location: Creative Arts Building - Center Stage



This year’s live china painting contest challenges you to create a piece with a ‘Fanciful Shoe’ done on a 9 - 10” plate. The design can be penned and painted or just painted. The artist can embellish their art with lusters, enamel, raised paste or gold & silver.

While the piece will not be painted live, it should be created specifically for this contest. Use your skill and imagination to create something that is a blend of old and new.

Entries will be judged on creativity and quality. Winning entries will remain on display through the duration of the Fair, as space allows. Displayed items may be picked up per the release instructions described in the Creative Arts Calendar of Events on page 3.

AWARDS

Premiums provided by World Organization of China Painters

Ribbons will be awarded through 5th place

- 1st Place Rosette & \$50
- 2nd Place Ribbon & \$35
- 3rd Place Ribbon & \$25

CERAMICS

Division 3539, 3540, and 3541

Exhibitors may ONLY enter one class (Novice, Advanced or Open) each year. Exhibitors may opt to move to a class with a higher experience level. Best of Show award winners may not return to a lower level, regardless of experience. Plate stands will be provided. No personal stands will be accepted at check in.

Please select the Division which best reflects your level of experience:

Division 3539 - Novice

For craftsmen with 4 years experience or less, winning . Only 1 entry per class.

Division 3540 - Amateur

For craftsmen who have never sold any work and have won 10 blue ribbons or less. Only 2 entries per class.

Division 3541 - Advanced/Open

For all craftsmen, including instructors & professionals. Only 2 entries per class.

Division 3539 - Novice

01. Stoneware/Pottery, miscellaneous finishes
02. Stains
03. Glazes
04. Glazes and stain combination
05. Overglaze (decals, lustre, metallic)
06. Miscellaneous techniques not specified

Division 3540 - Amateur & Division 3541 - Open FUNCTIONAL

01. non-fired finish
02. Fire glazes and finishes

Division 3540 & 3541 (continued)

SCULPTURAL

03. Non-fired finish
04. Fired glazes and finishes

WHEEL THROWN & HAND BUILT ORIGINALS

05. Mug/cup
06. Plate/Platter
07. Vase
08. Miscellaneous
09. Figurative Sculpture
10. Miscellaneous Sculpture

AWARDS

Ribbons will be awarded through 10th place in each class.

BEST OF SHOW, Novice (3539).....	Rosette & \$25
BEST OF SHOW, Advanced (3540)	Rosette & \$25
BEST OF SHOW, Open (3541)	Rosette & \$25

CERAMICS LIVE - GREAT POTTERY THROW DOWN

Division 3542

Wednesday, September 20, 2023

Check-in: 5 - 5:45 p.m. (NO LATE CHECK-INS)

Contest Begins: 6 p.m.

Location: Creative Arts Building - Center Stage

Compete to see if you can grow your clay into the tallest cylinder! Potters will be given 5 lbs. of clay and a wheel and have five minutes to see who can make the tallest and most stable cylinder. Wheels and clay will be provided by Oklahoma Contemporary.

AWARDS

Ribbons will be awarded through 10th place

1st Place	Rosette & \$50
2nd Place	Ribbon & \$25
3rd Place	Ribbon & \$10

GENERAL ANTIQUES

Division 3543

ALL ANTIQUE ITEMS MUST BE AT LEAST 50 YEARS OLD.

Exhibits from antique dealers will not be accepted.

Entries must be correctly classified. Judge(s) may withhold ribbons if the entry is deemed unworthy or is classified incorrectly

Previously entered exhibits are NOT eligible for re-entry.

All entries must be clean. Metal should be polished and in good condition for display.

Sets consisting of multiple pieces may be entered, but a maximum of two (2) pieces will be exhibited unless otherwise specified. The four main pieces of a Chess set may be exhibited.

If the item you are entering is unusual and not obvious as to its identity, age and/or origin, you may type or print neatly on a 3 x 5 card the story of your entry. We will display it with your item so Fairgoers may more thoroughly enjoy all antiques.

PLATE STANDS WILL BE PROVIDED. No personal stands will be accepted at check in.

Note: If you do not wish for your name to be displayed with your item, you may specify that at check-in.

- | | | |
|-------------------------------------|---------------------------------|--|
| 01. American china | 17. Pewter article | 33. Miscellaneous items (15 in. or less) |
| 02. German china | 18. Brass or copper article | 34. Small boxes (any material) |
| 03. French china | 19. Silver article | 35. State Fair memorabilia |
| 04. Oriental china | 20. Silver-plated article | 36. Telephones |
| 05. Commemorative china | 21. Cut glass | 37. Leather items |
| 06. Ironstone, stoneware or pottery | 22. Pressed glass | 38. Small cast iron items |
| 07. Stein or tankard | 23. Etched glass | 39. Railroad memorabilia |
| 08. Figurine | 24. Carnival glass | 40. Books |
| 09. Graniteware | 25. Commemorative glass | 41. Fishing equipment/tackle |
| 10. Jewelry | 26. Depression glass | 42. Advertising glass |
| 11. Pocket watch | 27. Glass, other | 43. Cigar & cigarette accessories |
| 12. Music boxes | 28. Purses | 44. Antique quilts |
| 13. Clocks | 29. Musical instruments (small) | 45. Military items |
| 14. Lamp (oil or electric) | 30. Small wooden items | 46. Fine art |
| 15. Paper items | 31. Camera equipment | 47. Small household appliances |
| 16. Cloth items | 32. Photos | |

NOTE: Items will be accepted only at the discretion of Superintendent as space permits.

AWARDS

Ribbons will be awarded through 10th place in each class.

- BEST OF SHOW Rosette & \$50**
2nd Place Overall Mini-Rosette & \$25
3rd Place Overall Mini-Rosette & \$15

ANTIQUÉ & REPRODUCTION DOLLS

Division 3544

ALL ANTIQUE ITEMS MUST BE AT LEAST 50 YEARS OLD.

Previously entered exhibits are NOT eligible for re-entry.

Dolls must be owned by the person making the entry.

Dolls must be brought on stands for display.

No reproductions in classes 1-17.

Dolls entered in classes 18-22 must be tagged 'reproduction'.

Note: If you do not wish for your name to be displayed with your item, you may specify that at check-in.

ANTIQUÉ DOLLS

1. European bisque (1840's - 1940's)
2. Antique China doll (1840's - 1940's)
3. Wooden doll
4. Half doll or pincushion doll
5. Cloth doll - antique American primitive
6. Jointed bisque, china or wooden miniature -8 inches and under
7. Composition doll (1900's - 1950's)
8. Mounted paper doll - no larger than 18 in. high and 36 in. wide
9. Costuming by owner or antique original clothing; must be original design and shown on antique doll. Judged on workmanship, styling and fabric used. No modern fabrics, underwear must be included (doll not judged)
10. Celebrity or character doll
11. Ethnic doll
12. Hard plastic doll (1940's - 1970's)
13. Vinyl fashion doll
14. Barbie or Barbie friends
15. Synthetic materials doll - vinyl, latex, rubber
16. Cloth doll - manufactured or made by owner

REPRODUCTION AND/OR DOLL ARTIST DOLLS

17. Character doll
18. Baby - cloth body
19. Baby - other body
20. Porcelain or composition body
21. Other

AWARDS

Ribbons will be awarded through 10th place in each class.

- BEST OF SHOW, Antique DollsRosette & \$50**
- 2nd Place Overall, Antique Dolls Mini-Rosette & \$25**
- 3rd Place Overall, Antique Dolls Mini-Rosette & \$15**
- BEST OF SHOW, Reproduction and/or Doll ArtistRosette & \$35**

ANTIQUE TOYS

Division 3545

ALL ANTIQUE ITEMS MUST BE AT LEAST 50 YEARS OLD.

Previously entered exhibits are NOT eligible for re-entry.

Exhibits from antique dealers will not be accepted.

All entries must be clean. Metal should be polished and in good condition for display.

Sets consisting of multiple pieces may be entered, but a maximum of two (2) pieces will be exhibited.

If the item you are entering is unusual and not obvious as to its identity, age and origin, you may type or print neatly on a 3 x 5 card the story of your entry. We will display it with your item, so Fairgoers may more thoroughly enjoy all antiques.

Note: If you do not wish for your name to be displayed with your item, you may specify that at check-in.

- | | |
|--|---|
| 01. Doll furniture or kitchenware | 08. Wind-up toys (robots, autos, walking/crawling toys) |
| 02. Banks | 09. Trains (electric, mechanical) |
| 03. Toys (rubber, wood, metal, cloth, plastic) | 10. Airplanes |
| 04. Character toys | 11. Musical toys |
| 05. Games or creative arts toys | 12. Space toys |
| 06. Farm toys (tractors, wagons, etc.) | |
| 07. Autos (painted tin, wood, celluloid, battery operated) | |

AWARDS

Ribbons will be awarded through 10th place in each class.

BEST OF SHOWRosette & \$25