



NEEDLE CRAFT



'23
COMP
GUIDE

FREE REGISTRATION:

July 1 - August 15

Find Your Contests Inside!

okstatefair.com/competitions/creative-arts



**OKLAHOMA
STATE FAIR**

MISSION STATEMENT

Oklahoma State Fair, Inc. is a 501(c)(3) not-for-profit corporation that serves the people of Oklahoma and is dedicated to continuing the organization's heritage of education, entertainment, and economic development through the operation of the OKC Fairgrounds and the annual Oklahoma State Fair.



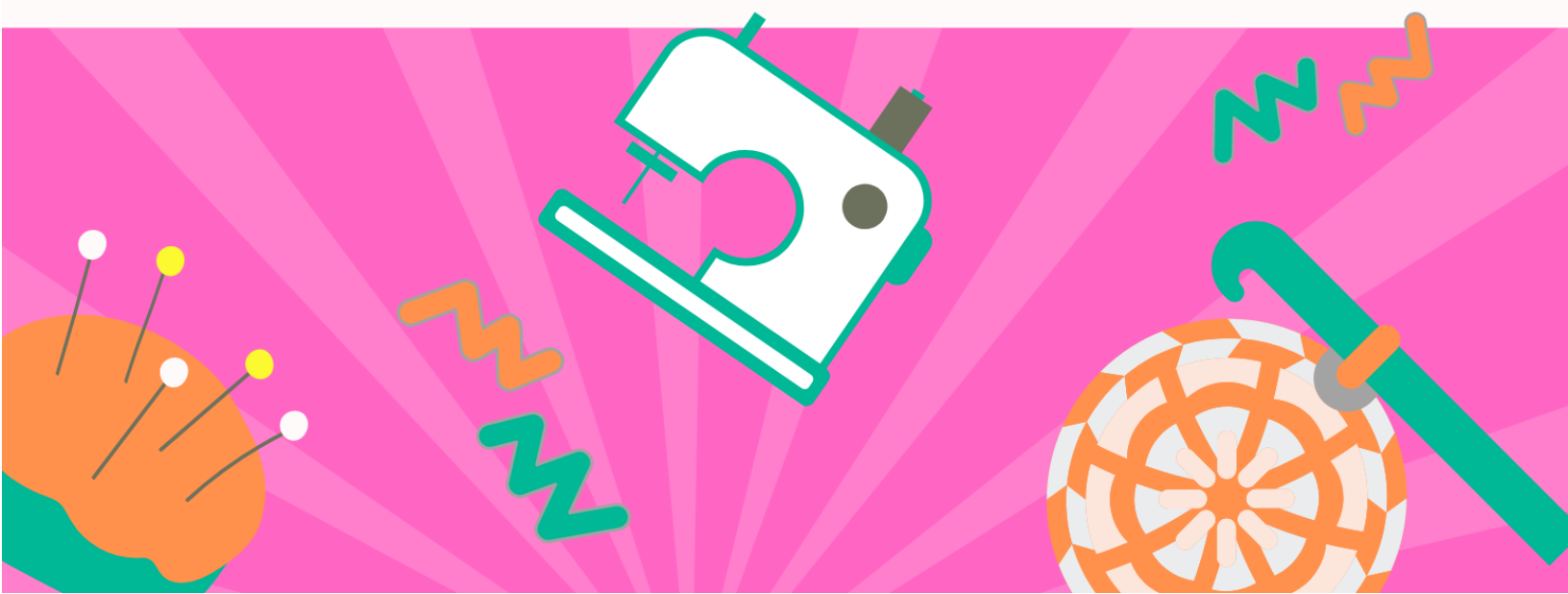


TAKE IN WEEKEND - AUG. 26 - 27

PROJECT LINUS - BLANKETS FOR A CAUSE (PG. 20)

FASTEST HOOK IN THE WEST FALL LEAVES (PG 21)

NOT YOUR NANA'S KNITTING CONTEST (PG. 21)



2023 Creative Arts Program Needlecraft Competition Guide

Table of Contents

Click on each contest to get more information!

Oklahoma State Fair Mission Statement.....	Pg. 2
What's New	Pg. 3
Calendar of Events	Pg. 5
Social Media Info	Pg. 6
Creative Arts Drop-Off, Pick Up & Directions	Pg. 7
Entry Info & Department Regulations	Pg. 8

NEEDLECRAFT DIVISIONS:

Household Articles (3560)	Pg. 9	Needlework and Lace (3570)	Pg. 14
Quilts (3561)	Pg. 10	Hand Weaving (3571).....	Pg. 15
Quilted Wall Hanging (3562)	Pg. 10	Hand Spinning (3572).....	Pg. 16
Master Category Quilts (3563)	Pg.11	Infant Crisis Services Contest (3573).....	Pg. 17
Master Category Quilted Wall Hanging (3564).....	Pg.11	Threads of Compassions Scarf Contest (3574)	Pg. 18
Infant's Clothing (3565)	Pg.12	Quilts of Valor (3575).....	Pg. 19
Children's Clothing (3566).....	Pg.12	The Linus Project Blankets for a Cause.....	Pg. 20
Adult Clothing (3567).....	Pg.12	LIVE: Fastest Hook in the West (3576)	Pg. 21
Hand Knitting and Crochet (3569)	Pg.13	LIVE: Not Your Nana's Knitting (3578)	Pg. 21

STAFF CONTACTS

Barbara Jordan
Superintendent
405-202-4961

Morgan Chappell
Creative Programs Manager
CreativePrograms@okstatefair.com
405-948-6731

2023 Creative Arts Quick Reference Guide

Creative Arts registrations must be submitted online.
Starting July 1, [CLICK HERE](#) to register.

Competition Guides

Posted Online: Thursday, June 1

Registration: Saturday, July 1, 9 a.m. - Tuesday, August 15

Deliver Exhibits: Saturday, August 26, 10 a.m. - 4 p.m.
Sunday, August 27, 11 a.m. - 4 p.m.

Pick Up Exhibits: Monday, September 25, 2 - 7 p.m.
Tuesday, September 26, 9 a.m. - 2 p.m.

Creative Arts Calendar of Events

Schedule for free registration: July 1 at 9 a.m. through August 15

FREE REGISTRATION MUST BE DONE ONLINE. If you do not have computer access, please go to your local library or contact your local OSU Cooperative Extension Services.

Late registration: We will no longer accept late registration, but we will have on-site registration during take-in.

On-site registration: August 26, from 10 a.m. to 4 p.m. and August 27, from 11 a.m. to 4 p.m. Exhibitors will be charged a \$12 fee per exhibitor (not per entry). **Credit or Debit cards will only be accepted.**

Highlighted Below Are 2023 Date Changes. Please be aware.

CALENDAR

- June 1** New competition guides posted online.
- July 1** Online registration opens at 9 a.m.
- August 15** Entry deadline for the Oklahoma State Fair Creative Arts competitions and contests. Free registrations must be received online by August 15.
- August 16** We will no longer accept late online registrations, but you will be able to register on site during take-in with a small fee of \$12. All entries will be turned in on the listed check-in days or on the day of the live contest.
- August 26** Entry clerks will receive items at the Creative Arts Building from 10 a.m. to 4 p.m. Late registration will be available to enter with a \$12 late registration fee done electronically.
- August 27** Entry clerks will receive items at the Creative Arts Building from 11 a.m. to 4 p.m. Late registration will be available to enter with a \$12 late registration fee done electronically.
- August 28 - September 11** All Creative Arts entries judged (excludes live contest entries). This is closed judging. Exhibitors are not permitted to attend. We encourage you to come to the Fair to view results. Judging results will be posted online as soon as they are available, possibly after the end of the State Fair. **Do not call or email to ask for results. They cannot be given out prior to posting.**
- September 14** Oklahoma State Fair opens! The Creative Arts Building will host a series of demonstrations, live contests, and special events every day of the Fair.
- September 24** Last day of the Oklahoma State Fair.
- September 25** Entry clerks will release exhibits upon presentation of claim check at the Creative Arts Building from 2 to 7 p.m.
- September 26** Entry clerks will release exhibits upon presentation of claim check at the Creative Arts Building from 9 a.m. to 2 p.m. Items not picked up become property of the Oklahoma State Fair.

SHOW US WHAT YOU'RE WORKING WITH

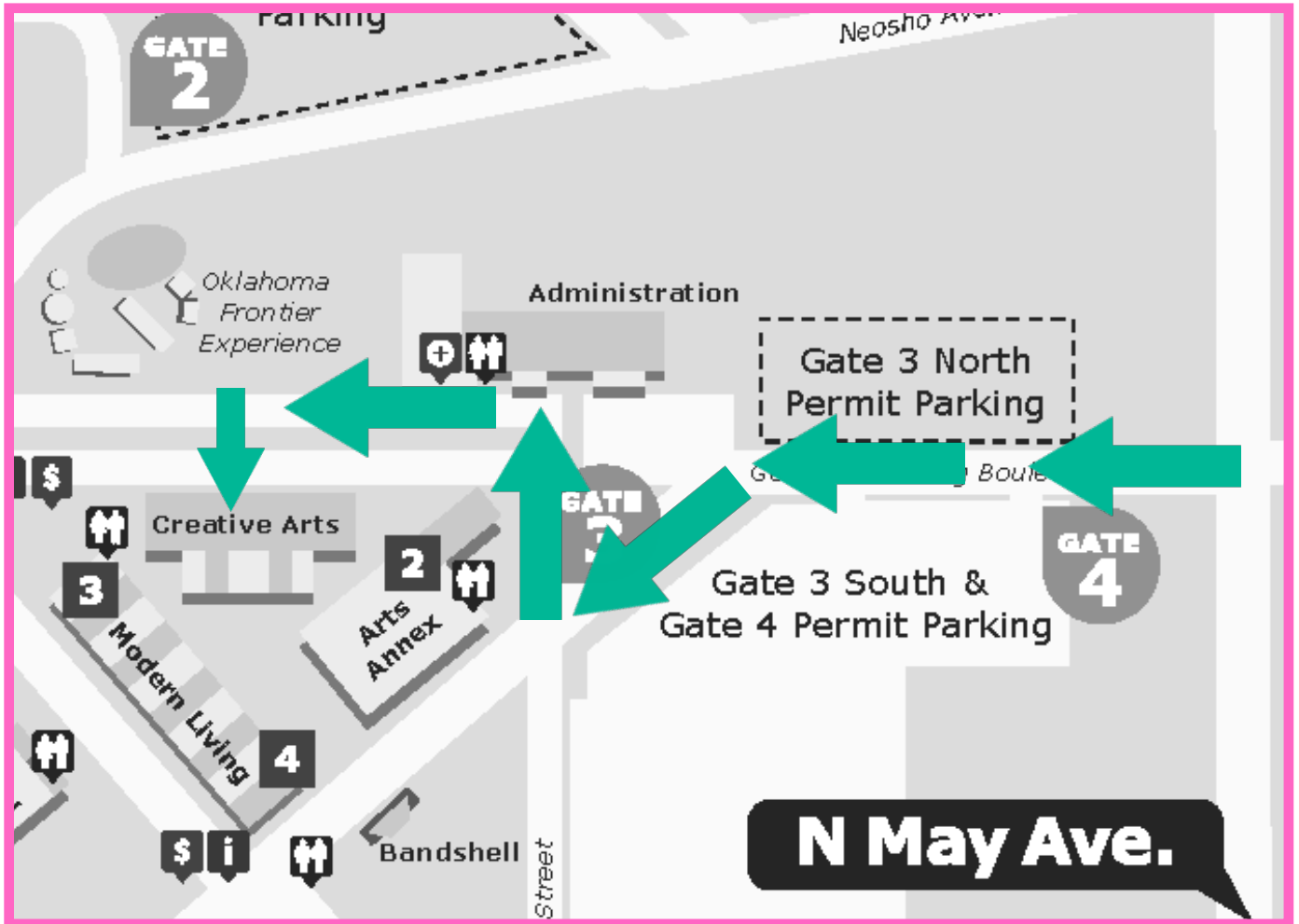


We know sometimes it takes all year to create something magical to enter in the Fair, or just a few days! Share your progress with us! Tag the Fair when you share your creations and ribbons by using #okstatefair!



@okstatefair

Creative Arts Drop-Off & Pick Up Map & Information



How To Get Here: Pre-Fair

Our physical address is 3100 General Pershing Blvd, OKC, OK 73107.

From I-44 take the NW 10th St. eastbound exit and follow until NW 10th St. and May Ave. (2nd light). Turn right onto May Ave. Proceed to Gate 3 (1st light) and drive towards the gate. You will then enter the OKC Fairgrounds and make your way to the Creative Arts Building.

Drop-Off Information

Drop-off is Saturday, August 26 from 10 a.m. - 4 p.m. and Sunday, August 27 from 11 a.m. - 4 p.m. At check-in you will be given a claim check tag. PLEASE SAVE THESE as they are what you will need to pick up your item(s).

Pick Up Information

Pick Up is Monday, September 25 from 2 - 7 p.m. and Tuesday, September 26 from 9 a.m. - 2 p.m. Please remember to bring your claim check tag as this is how you reclaim your pieces.

CREATIVE ARTS RULES AND REGULATIONS

ENTRY INFORMATION

Who Can Enter? ONLY OKLAHOMA RESIDENTS may enter our contests. Exhibitors entering must be amateurs unless an Open (expert) Division is offered.

Who is considered an Amateur? Someone who earns less than 10% of their income from this skill. If you have taught this craft before, or currently teach, you are not considered an Amateur, but may enter in an open class, if available.

Are there any size limitations? Furniture may be no larger than 40" in any direction. All other exhibits are limited to 30" in any direction.

How many exhibits can be entered? ONE ENTRY PER CLASS (unless otherwise stated.) There is no limit on the total number of entries. Photography is the exception with 12 total entries allowed per exhibitor. All entries must have been completed since the final day of the previous Oklahoma State Fair.

What is the cost to enter? CREATIVE ARTS ENTRIES ARE FREE if registered by August 15. (Only the wine contest requires an entry fee.)

May I mail in my exhibit? No.

Do I need to pre-register for live contests? Yes. You cannot register the day of.

How do I get into the Fair if I am entered in a live contest? **ONLY EXHIBITORS** receive FREE ENTRY AND PARKING with live contests. Family and friends will need to purchase a ticket to get in the day of the contest. Please check out our pre-sale of tickets starting in July and ending the day before the start of the Fair.

All entries must be the work of the exhibitor and completed since the previous Oklahoma State Fair except as noted.

CREATIVE ARTS DEPARTMENT REGULATIONS

- The Oklahoma State Fair reserves the right to reject any exhibit offered if it is objectionable in any way, if it requires an excessive amount of space, or if the capacity of the department has been reached. Any contest may be cancelled for lack of entries.
- Each item turned in is completed by one person, unless otherwise noted in the competition information.
- Your items will be handled with care, however, Oklahoma State Fair, Inc. is not responsible for items that are damaged while on display during the Fair. Exhibitors MAY NOT supply their own display stands. Only OSF stands will be used for display.
- Each exhibit will be evaluated by qualified individuals and the decision of the judge(s) is final. All cash prizes will be paid from the awards as marked by the judges and not from ribbons that may be attached to the exhibits. Judges are instructed not to award cash prizes unless the exhibit is deemed worthy of the placing awarded. Premium payouts for the Creative Arts Department will be mailed to exhibitors after the close of the Fair.
- Within 90 days from the last day of the 2023 Oklahoma State Fair, it is the responsibility of the Payee to file, in writing, a claim for lost or incorrect awards.
- If it is ascertained that an exhibitor has made any false statement with regards to any article or exhibit, or if any exhibitor attempts to harass or interfere with the judge or judges in the performance of their duties, the exhibitor shall be excluded from competition and forfeit all premiums.
- Any protest must be made in writing and accompanied by a deposit of \$50, which will be forfeited if protest is not sustained. Said protest must state plainly the cause of complaint or appeal and must be filed with the Creative Programs Manager by 5 p.m. on Thursday of the closing week of the Fair. Judges will be encouraged to view exhibits after items have been placed on display with names. If they believe that an exhibitor is not in the correct skill level, that judge will be encouraged to protest the placement.
- Every effort will be made to display entries in an attractive arrangement; however, items entered for competition will be displayed through 3rd place. Other entries will be displayed only as space is available and at the discretion of the superintendents.

HOUSEHOLD ARTICLES

Division 3560

01. Tablecloth, original or unusual design
02. Table runners
03. Place mats (two only)
04. Pillow case - crochet trimmed
05. Pillow case - embroidery
06. Hand towels
07. Doilies - crocheted (unmounted)
08. Doilies - crocheted (mounted)
09. Small kitchen accessories (3 items to display)
10. Rug - yarn hook or other
11. Throw pillow, not over 18"
12. Fleece throw (sewn, knotted or tied)
13. Miscellaneous - machine sewn
14. Miscellaneous - hand sewn

AWARDS

Ribbons will be awarded through 10th place in each class.

BEST OF SHOW Rosette & \$25

QUILTS AND QUILTED WALL HANGING

Division 3561 and 3562

Quilts have been separated into exhibits quilted entirely by the exhibitor and exhibits quilted by an outside source. Please select the appropriate class for your exhibit.

Minimum size of quilts should be 40" x 60". If smaller, please enter in Quilted Wall Hangings.

All quilts must have been completed since the previous Fair (September 1, 2022 - August 26, 2023).

If you have won two or more blue ribbons (1st Place) in the Oklahoma State Fair, other state fairs or state, regional, or national quilt shows, you must enter in the Quilting Masters Category (Division 3563-4).

If you are a teacher and/or professional who earns money from quilt making, you must enter in the Quilting Masters Category (Division 3563-4). Only one exhibit per class will be accepted.

3561 - QUILTS

Quilts - Made & Quilted Entirely by the Exhibitor

01. Original design
02. Whole cloth quilt machine quilted
03. Sampler quilt (each block different)
04. Machine applique quilt
05. Hand applique quilt
06. Pieced cotton quilt
07. Machine quilted quilt
08. Hand quilted quilt
09. Hand embroidered quilt
10. Machine embroidered quilt
11. Comforter, tacked
12. Novelty quilt (ex. crazy quilt)
13. Crib quilt
14. T-shirt quilt

Quilts - Made by the Exhibitor but Quilted by an Outside Source

15. Original design
16. Pieced cotton quilt
17. Hand applique or hand embroidered quilt
18. Machine applique quilt

Miscellaneous - Can be made & quilted entirely by exhibitor or made by exhibitor & quilted by an outside source.

19. Quilt made by a group (5 or more people)
20. Throw pillow, quilted
21. Quilted clothing
22. Denim quilt
23. Miscellaneous quilted items
24. Miscellaneous quilt

3562 - QUILTED WALL HANGINGS

Can be made & quilted entirely by exhibitor or made by exhibitor & quilted by an outside source

01. Original
02. Mixed technique
03. Miniature
04. Hand applique
05. Machine applique
06. Pieced
07. Holiday
08. Machine embroidered

AWARDS

Ribbons will be awarded through 10th place in each class.

BEST OF SHOW, Quilts (3561)	Rosette & \$25
2nd Place Overall, Quilts (3561)	Rosette & \$15
3rd Place Overall, Quilts (3561)	Rosette & \$10
BEST OF SHOW, Quilted Wall Hanging (3562)	Rosette & \$15

MASTER CATEGORY: QUILTS & QUILTED WALL HANGINGS

Division 3563 and 3564

A Master quilt maker is someone who has won two or more blue ribbons (1st Place) in the Oklahoma State Fair, other state fairs or state, regional, or national quilt shows. A person is also considered a master quilt maker if he or she is a professional who has earned money from quilt making or teaching quilt making.

Quilts have been separated into exhibits quilted entirely by the exhibitor and exhibits quilted by an outside source. Please select the appropriate class for your exhibit.

Minimum size of quilts should be 40" x 60". If smaller, please enter in Quilted Wall Hangings.

All quilts must have been completed since the previous Fair (September 1, 2022 - September 10, 2023).

3563 - QUILTS

Quilts - Made & Quilted Entirely by the Exhibitor

01. Original design
02. Sampler quilt (each block different)
03. Machine applique quilt
04. Pieced cotton quilt
05. Machine quilted quilt
06. Hand quilted quilt
07. Machine embroidered quilt
08. Crib quilt
09. Novelty quilt

Quilts - Made by the Exhibitor but Quilted by an Outside Source

10. Original design
11. Pieced cotton quilt
12. Machine applique quilt
13. Novelty quilt (ex. crazy quilt)
14. Crib quilt

Miscellaneous - Can be made & quilted entirely by exhibitor or made by exhibitor & quilted by an outside source.

15. Quilts created by a group (5 or more people)
16. Throw pillow, quilted
17. Miscellaneous quilted items
18. Quilted clothing
19. Miscellaneous quilt

3564 - QUILTED WALL HANGINGS

Can be made & quilted entirely by exhibitor or made by exhibitor & quilted by an outside source

01. Original
02. Mixed technique
03. Miniature
04. Hand applique
05. Machine applique
06. Pieced
07. Holiday
08. Machine embroidered

AWARDS

Ribbons will be awarded through 10th place in each class.

BEST OF SHOW, Quilts (3563) Rosette & \$25

BEST OF SHOW, Quilted Wall Hanging (3564) Rosette & \$15

INFANT, CHILDREN & ADULT CLOTHING

Division 3565, 3566 and 3567

3565 INFANT CLOTHING

01. Christening dress
02. Dress, other
03. Garment not specified
04. Infant accessories

3566 CHILDREN CLOTHING

01. Girl's dress - 2-6 years
02. Girl's dress - 7-11 years
03. Girl's play clothes
04. Boy's clothes
05. Sleeping garment
06. Garment not specified
07. Costume

3567 ADULT CLOTHING

01. Lingerie
02. Ladies' Skirt
03. Blouse
04. Ladies' casual clothes
05. Dress - cotton
06. Dress - other material
07. Dress (for "after five")
08. Ladies' suit
09. Ladies' pants
10. Ladies' coat or jacket
11. Men's shirt
12. Costume
13. Fashion accessories
14. Fabric purse
15. Machine embroidered clothing
16. Miscellaneous clothing

AWARDS

Ribbons will be awarded through 10th place in each class.

- BEST OF SHOW, Infant Clothing (3565) Rosette & \$15**
BEST OF SHOW, Children Clothing (3566) Rosette & \$25
BEST OF SHOW, Adult Clothing (3567)..... Rosette & \$50

HAND KNITTING & CROCHET

Division 3569

Hand Knitting

01. Sweater or vest - knitted
02. Cardigan
03. Jacket or coat
04. Cape or shawl
05. Fashion accessories - scarves
06. Fashion accessories - other
07. Purses
08. Socks
09. Child's sweater
10. Child's dress
11. Three-piece baby set
12. Baby blanket
13. Home accessories
14. Knitted afghan
15. Knitted afghan, original design
16. Article using both knitting and crochet
17. Miscellaneous clothing
18. Loom Knitting

CROCHET

19. Sweater or vest - crocheted
20. Fashion accessories - scarves
21. Fashion accessories - other
22. Purses
23. Child's sweater
24. Child's dress
25. Three-piece baby set
26. Cape or shawl
27. Home accessories
28. Afghan - crocheted
29. Afghan - granny squares
30. Afghan - ripple
31. Afghan - shell stitch
32. Afghan - Navajo
33. Afghan - original design
34. Baby blanket - crocheted
35. Baby blanket - ripple
36. Baby blanket - shell stitch
37. Toys - entirelyly crochet
38. Toys - amigurumi
39. Toys - toddler
40. Toys - infant

AWARDS

Ribbons will be awarded through 10th place in each class.

BEST OF SHOW APPAREL, Knitting	Rosette & \$25
BEST OF SHOW AFGHAN, Knitting	Rosette & \$25
BEST OF SHOW APPAREL, Crochet	Rosette & \$25
BEST OF SHOW AFGHAN, Crochet	Rosette & \$25
BEST OF SHOW, Toys	Rosette & \$25

NEEDLEWORK & LACE

Division 3570

No pictures exceeding 30" x 24" will be accepted. Pictures must be ready to hang.

MISCELLANEOUS NEEDLEWORK

01. Crewel embroidery
02. Needlepoint
03. Petit point (whole design)
04. New embroidery (pop, quick or other)
05. Embroidery - cross stitch, printed pattern
06. Embroidery - cross stitch or outline
07. Counted cross stitch, from a graph - indoor scenes - design area under 11" x 14"
08. Counted cross stitch, from a graph - indoor scenes - design area 11" x 14" or larger
09. Counted cross stitch, from a graph - outdoor scenes - design area under 11" x 14"
10. Counted cross stitch, from a graph - outdoor scenes - design area 11" x 14" or larger
11. Counted cross stitch, from a graph - phrases or quotations - design area under 11" x 14"
12. Counted cross stitch, from a graph - phrases or quotations - design area 11" x 14" or larger
13. Counted cross stitch, from a graph - figures - design area under 11" x 14"
14. Counted cross stitch, from a graph - figures - design area 11" x 14" or larger
15. Counted cross stitch, from a graph - animals - design area under 11" x 14"
16. Counted cross stitch, from a graph - animals - design area 11" x 14" or larger

MISC. NEEDLEWORK (continued)

17. Counted cross stitch - original design
18. Counted cross stitch - sampler
19. Counted cross stitch - linen or other fabric
20. Counted cross stitch - other
21. Embroidery, mixed types
22. Ribbon embroidery
23. Stuffed toys
24. Cloth doll
25. Miscellaneous needlework
26. Latch hook, original design
27. Dress-me doll - acrylic yarn
28. Dress-me doll - cotton thread
29. Dress-me - stuffed animal (animal not judged)

HOLIDAYS

Christmas

30. Stocking - needlepoint
31. Stocking - crochet
32. Stocking - counted cross-stitch
33. Miscellaneous

Other Holidays

34. All other holiday items

HANDMADE LACE

35. Hair pin lace
36. Bobbin lace
37. Needle lace
38. Miscellaneous lace, handmade
39. Tatting

AWARDS

Ribbons will be awarded through 10th place in each class.

BEST OF SHOW, Miscellaneous Needlework	Rosette & \$50
2nd Place Overall, Miscellaneous Needlework.....	Rosette & \$25
3rd Place Overall, Miscellaneous Needlework.....	Rosette & \$15
BEST OF SHOW, Holidays	Rosette & \$15
BEST OF SHOW, Handmade Lace	Rosette & \$25

HAND WEAVING

Division 3571

All articles must be handwoven, having warp and weft thread structure.

No more than two entries per category will be accepted from each exhibitor.

Judging Criteria:

Color and Design:	40%
Competency of weaving:	40%
Suitability:	20%

Entries scoring less than 80% will be placed on exhibition only at the discretion of the superintendent.
Piece goods exhibited must consist of at least two yards.

Finished articles will not be accepted if piece goods from which it was made have already been judged at a previous Oklahoma State Fair. Open to everyone, amateur and professional.

01. Fabric yardage
02. Constructed garment
03. Tapestries and wall hangings
04. Rugs
05. Household linens - place mats, towels, etc., all linen fibers
06. Household linens - other than linen fibers
07. Accessories, aprons, handbags, hats and scarves
08. Afghans, baby blankets, throws and coverlets
09. Ponchos, capes, shawls or stoles
10. Article not otherwise specified
11. Pillows

AWARDS

Premiums provided by the Weavers Guild of Oklahoma City
Ribbons will be awarded through 10th place in each class.

BEST OF SHOW	Rosette & \$50
BEST OF SHOW, Wearable	Rosette & \$25
BEST OF SHOW, Household Linen.....	Rosette & \$25

HAND SPINNING

Division 3572

No more than TWO entries per category will be accepted from each exhibitor.

Handspun skein must be 100% handspun and not a commercial yarn.

Skein must consist of 50 yards of the handspun yarn, tied in four places.

Fiber may be a natural color, white or dyed with any type of dye.

Competitors can enter two items per class.

Skeins

01. Sheep's wool - single ply
02. Sheep's wool - two ply
03. Camelid - single ply
04. Camelid - two ply
05. Camelid - novelty
06. Cellulose (includes eco-friendly or green fibers like flax, bamboo, hemp, cotton raimie) - single ply
07. Cellulose (includes eco-friendly or green fibers like flax, bamboo, hemp, cotton raimie) - two ply
08. Cellulose (includes eco-friendly or green fibers like flax, bamboo, hemp, cotton raimie) - novelty
09. Novelty (must consist of at least 50% handspun) - single ply
10. Novelty (must consist of at least 50% handspun) - two ply

Finished Articles

11. Knitted article
12. Crocheted article
13. Woven article

AWARDS

Ribbons will be awarded through 10th place in each class.

BEST OF SHOW, Skeins Rosette

BEST OF SHOW, Finished Articles Rosette & \$25

INFANT CRISIS SERVICES CONTEST

Division 3573

Every year, Creative Arts participants enter beautiful hand-made artwork, crafts and sewn items to be displayed during the Fair. Now, you have an opportunity to donate your exhibits to an Oklahoma organization that helps children in need.

Infant Crisis Services provides life-sustaining formula, food and diapers to babies and toddlers in time of crisis, because no baby should go hungry.

Exhibitors may enter up to three items per class. If you would like to enter more than three items in a particular class, please call 405-948-6731.

All items entered into this division will be displayed together during the annual Oklahoma State Fair and then donated to Infant Crisis Services after the Fair ends. Award ribbons will be returned to exhibitors at the close of the Fair.

Blankets/Clothes

01. Quilt
02. Comforter - tacked
03. Sewn blanket
04. Fleece throw - sewn, knotted or tied
05. Afghan - knitted or crochet
06. Infant/child clothes (0 month to 4T) - sewn
07. Infant/child clothes (0 to 4T) - knitted or crochet

Blankets/Clothes cont.

08. Infant cap - knitted or crochet
09. Infant booties - knitted or crochet (cannot have ribbon or yarn ties)

Toys

(Toys should not include loose button eyes, pom poms, etc for choking hazards)

10. Toys - sewn
11. Toys - knitted or crochet

AWARDS

Ribbons will be awarded through 10th place in each class.

A special ribbon will be awarded to each exhibitor.

BEST OF SHOWRosette



Organization Information:

It is hard to imagine anything more stressful than sending your baby to bed hungry, yet it happens every day in central Oklahoma. Infant Crisis Services strives to make a difference in the life of a hungry baby. They provide formula, food, diapers, clothing and other essential items to babies during a very critical stage in a baby's development. Infant Crisis Services also serves as a link to connect families with other helping agencies and programs that lead to self-sufficiency. They believe each individual should be treated with compassion and respect.

Statistics:

One in four Oklahoma babies go to bed hungry.

85% of brain development occurs during the first 3 years of life.

There are close to 38,000 babies and toddlers living in poverty in central Oklahoma.

In 2020 - 2021, Infant Crisis Services served more than 21,900 babies and toddlers.

In 2020 - 2021, Infant Crisis Services gave away 8,325 bottles with 233,100 bottles of formula and 972,752 diapers.

Website: www.infantcrisis.org

THREADS OF COMPASSION SCARVES Division 3574

This Creative Arts contest will benefit survivors of sexual violence. Threads of Compassion provides scarves to hospitals that are given to survivors when they seek emergency treatment.

Scarves must be knitted or crocheted and can be any color or pattern, using acrylic yarn. Scarves must be 5 - 8" wide and 65" long to ensure anyone can enjoy wearing one.

Exhibitors may enter up to three items per class. If you would like to enter more than three items in a particular class, please call 405-948-6731.

All items entered into this division will be displayed together during the annual Oklahoma State Fair then donated to Threads of Compassion, Oklahoma City to bring joy to survivors of sexual violence. Award ribbons will be returned to exhibitors at the close of the Fair.

- 01. Knitted scarf
- 02. Crocheted scarf

AWARDS

Ribbons will be awarded through 10th place in each class.
A special ribbon will be awarded to each exhibitor.

BEST OF SHOW**Rosette**



Organization Information:

Threads of Compassion is an opportunity to comfort recent survivors of sexual violence. The idea is simple - anyone whose life has been affected by sexual assault or abuse (either through a direct experience or through supporting a survivor) is welcome to knit or crochet a scarf that will be given to a survivor of sexual violence when the survivor enters a hospital for emergency treatment.

Starting in 2010, Threads of Compassion began working with the Oklahoma City YWCA to provide this service. The Oklahoma City chapter is following the precedence of other Threads chapters around North America.

For more information about the organization, check out www.threadsokc.org.

QUILTS OF VALOR

Division 3575

This contest offers an opportunity for quilters to make creative quilts that will be donated to the Quilts of Valor Foundation, which supports veterans who have been touched by war.

The basic requirements will be emailed to exhibitors following their registration but can be viewed at any time at <http://www.qovf.org/quilters-questions/basic-requirements>.

Each exhibitor may enter 2 items in this division. All items entered into this division will be displayed during the annual Oklahoma State Fair then donated to the Quilts of Valor Foundation. Award ribbons will be returned to exhibitors at the close of the Fair and premiums will be processed and mailed normally.

Note: If an exhibitor would like to present their quilt to a specific veteran, please request during check-in that the piece be available at reclaim. The name of the veteran and the QOVF request number must be provided when picking up the quilt to avoid duplicate presentations by the QOV organization.

AWARDS

A special ribbon will be awarded to each exhibitor.

BEST OF SHOW..... Rosette & \$25
2nd Place Overall..... Rosette & \$15



Organization Information:

Founded in 2003, the mission statement of the foundation is “to cover all service members touched by war with comforting and healing Quilts of Valor.”

Website: www.qovf.org

THE LINUS PROJECT BLANKETS FOR A CAUSE Division 3576

This Creative Arts contest is here to provide blankets given to children who are seriously ill, traumatized or otherwise in need through gifts of new handmade blankets and Afghans.

Exhibitors may enter up to two items per class. If you would like to enter more than two items in a particular class, please call 405-948-6731.

All items entered into this division will be displayed together during the annual Oklahoma State Fair and then donated to The Linus Project after the Fair ends. Award ribbons will be returned to exhibitors at the close of the Fair.

Blankets must be made in fabrics and colors suitable for children 0 – 18 years of age. No wool products are allowed.

- 01. Tummy Time Blankets (45" x 45")
- 02. Crib Blankets (40" x 60")
- 03. Comfort Blankets – 0 – 5 (40" x 60")
- 04. Comfort Blankets – 6 – 18 (63" x 87")



Project Linus

AWARDS

Ribbons will be awarded through 10th place in each class.
A special ribbon will be awarded to each exhibitor.

BEST OF SHOW.....Rosette

Organization Information:

Founded in 1995, the mission of Project Linus is to provide love, a sense of security, warmth and comfort to children who are seriously ill, traumatized, or otherwise in need through the gifts of new handmade blankets and afghans, lovingly created by volunteer “blanketeers.” They also are able to provide a rewarding and fun service opportunity for interested individuals and groups in local communities, for the benefit of children.

Website: www.projectlinus.org

FASTEST HOOK IN THE WEST

Division 3577

Tuesday, September 19, 2023

Check-in: 1:15 - 1:45 p.m. (NO LATE CHECK-INS)

Judging Begins: 2 p.m.

Location: Demonstration Stage in Middle Bay

Participants will be timed as they crochet two fall leaves. The pattern will be emailed to registered exhibitors following the close of registration. All participants must bring the following materials:

Materials:

- Yarn: worsted weight (CYC 4) yarn in a fall color
- Crochet Hook: Size 4.0 mm (U.S. G)

When we say "GO", exhibitors will begin to crochet. Judging will be based on speed as well as quality. Pre-registration is required and exhibitors will receive free gate admission and free parking.

Winning pieces will be displayed for the remainder of the Fair and will be picked up at reclaim, September 25 - 26.

AWARDS

Ribbons will be awarded through 10th place in each class.

1st Place	Rosette & \$75
2nd Place	Ribbon & \$50
3rd Place	Ribbon & \$25

NOT YOUR NANA'S KNITTING

Division 3578

Saturday, September 16, 2023

Check-in: 3:15 - 3:45 p.m. (NO LATE CHECK-INS)

Judging Begins: 4 p.m.

Location: Center Stage

This isn't how your nana taught you how to knit! The first 10 to sign up will compete against the clock (and each other) to see how much they can knit in a 10-minute time frame using a surprise item provided by the Fair!

The Oklahoma State Fair will provide the knitting utensils as well as the yarn used to knit. Just show up and have nimble fingers!

AWARDS

Ribbons will be awarded through 10th place in each class.

1st Place	Rosette & \$75
2nd Place	Ribbon & \$50
3rd Place	Ribbon & \$25